

# ASSEMBLY INSTRUCTIONS

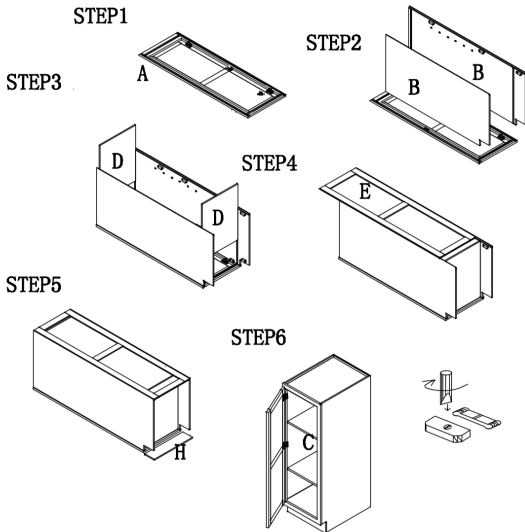
## UTILITY CABINET BASE (UCB 1854,)

### CABINET PARTS LIST

A-Doors & Face Frame B-End Panels(2) C-Shelves(2) D-Top/Medium/Bottom Panels(2)  
E-Back Panel H-Toe Kick

### HARDWARE PARTS LIST

#### 1. Shelf Clips ( 8 )



Your cabinet is complete. For installation, consult a professional contractor or building supplier for the proper installation method or materials to be used for your existing wall condition (e.g., wood, concrete, tile, etc.).